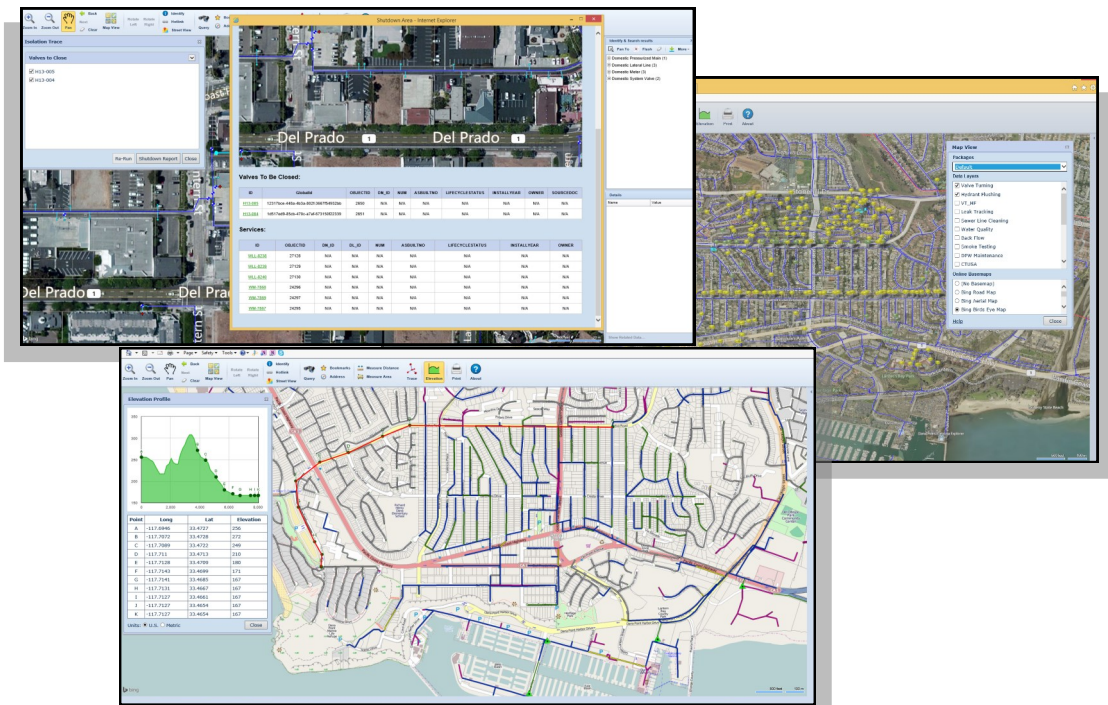


## View Enterprise Data and Dynamic Workflows

### Highlights

- ⇒ Enterprise Water GIS Portal
- ⇒ Access Your GIS Maps, Documents, Drawings and Data Easily
- ⇒ Track and View Dynamic Work Order Statuses
- ⇒ Multiple Map-View Options Including OSM Maps
- ⇒ Customized Views
- ⇒ Easy Data and Document Retrieval
- ⇒ Support for Time Series Data Charting
- ⇒ Shutdown Isolation and Notification Tool
- ⇒ Web-based GIS Access to Enterprise Data and Documents
- ⇒ Makes GIS Investment Valuable to Entire Enterprise



**Mapplet** allows your Enterprise to leverage its investment in a Geographic Information System (GIS). Mapplet allows users to gain access to GIS maps, all sorts of tabular data, and related engineering or other drawings and documents, and see them from a spatial perspective.

Built on Microsoft's technology, Mapplet allows you to gain access to data from all aspects of your system including Customer Service, Field Operations, Engineering, Finance, and any other enterprise data in which you wish to connect. These departments can use this highly innovative GIS viewer to fully utilize their GIS program.

### HTML5 Based

**Mapplet** is launched from within a web browser and is automatically maintained and version controlled. It simplifies the presentation of geographical data that is served through your ArcGIS source data.

### Data Warehouse

Behind the scenes, Mapplet consists of a database warehouse that can be designed to be populated with data from just about any data source in the enterprise. The database itself can be Microsoft SQL Server or Oracle. If you already have an enterprise data mart, Mapplet can be configured to retrieve data from this database.

### CONTACT US

BreezeSoft, LLC  
7d, Zdolbunivska str.,  
of. 406, Kyiv 02081,  
Ukraine

info@breeze-soft.com